

Planet Tribute

ATTENTION SEEKERS!

The editor apologizes for this delayed and truncated edition of your revered **Planet**. But as you will see, my attention was by necessity elsewhere, and in honor of my irreplaceable lost soulmate, I was not only greatly distracted, but newly saddened by the reality of her absence.

Indeed, her tribute was cathartic for us all, but it also reminded us that although we could celebrate what would have been her 75th birthday on August 20, which I did with our old friend **Betsey Brubaker** and my new friend **Adele Abrams**, at Gourmondo, it did not detract us from recognizing her absence.

So, what I'm struggling to say is that **Melinda's** extraordinary tribute, filled with truly loving friends and colleagues who so adored her, evoked her presence in such a startling way, that I seemed afterwards to feel her loss even more keenly. And so is grief...





Laugh after death

Dear Friends -- You will see if you click on the link, below, what a beautiful and heartfelt tribute we had for my dear **Melinda** on Sunday afternoon, August 11, at our beloved **Antaeus Theatre** on Broadway in Glendale.

The theater was graciously turned over to us for a rehearsal and "performance" enabled by **Kristin Weber**. Food and wine provided by **Marsha Nardo** and **Off the Wall Catering**, was organized by our dear friends **Charles Moed** and **Flori Schutzer**, while welcoming "Heavenly Chants" harp and flute music was provided in the lobby

by **Salpy** and **Sossy Kerkorian**, with flowers by **Bonnie Peterson**, graphic design by my daughter **Kristin Campbell**, technical design by **John Apicella**, Melinda's portrait by **Rob Lewine**, and the entire event produced by **Jamie Alcroft** – generous allies, all! Thank you.

Here's the program. Enjoy... [CLICK HERE](#)

THROUGHOUT THE 'PLANET,' CLICKING **DARK RED TYPE** OPENS A RELATED INTERNET LINK.



"Stardom isn't a profession, it's an accident." ~ Lauren Bacall

The Case of the Missing Case of Chicken

When KFC ran out of chicken, it published this brilliant apology — but the best part was what it DIDN'T say. This was 2018. KFC had to close 90 percent of its UK locations. Disaster! Instead of posting a statement on social, KFC decided to run a print ad in two national newspapers.

Why? Because anyone can post on social — but print costs money, so consumers consider it more serious. (And it'll end up on social anyway.) They rearranged the letters KFC for FCK, which was funny — and then apologized, detailing how they're "working tirelessly" to fix the problem.



Now here's the most important part: KFC did ***NOT*** blame anyone else.

They could have. KFC had recently switched its food delivery service, and the new company's screw-up caused the shortages.

But KFC understood: This was a time to rebuild trust. And passing the blame **NEVER** builds trust.

So KFC owned the error. It apologized, acknowledged customers' frustrations, explained what it's doing to fix the issue, and expressed gratitude.

That's a formula for a perfect — or, uhh, perFCK — apology.

WE'RE SORRY

A chicken restaurant without any chicken. It's not ideal. Huge apologies to our customers, especially those who travelled out of their way to find we were closed. And endless thanks to our KFC team members and our franchise partners for working tirelessly to improve the situation. It's been a hell of a week, but we're making progress, and every day more and more fresh chicken is being delivered to our restaurants. Thank you for bearing with us.

Visit kfc.co.uk/crossed-the-road for details about your local restaurant.

"The old world is dying, and a new world struggles to be born: now is the time of monsters." ~ Antonio Gramsci

"Don't look back. Someone may be gaining on you."
~ Satchel Paige

Glutomoto Attacks Toyko!

FIRESIGN THEATRE WAS A LEGENDARY American radio comedy group that was popular in the 1960s and 1970s.

While they were based in the US, their surreal and experimental style gained a significant following in Japan. In fact, Firesign Theatre's work was widely acclaimed and influential among Japanese artists, comedians, and writers.

Some notable Japanese fans and admirers of Firesign Theatre include:

- **Haruki Murakami:** The renowned

author has often cited Firesign Theatre as an inspiration for his surreal and absurdist writing style.

- **Yoko Ono:** As an artist and musician, Ono has mentioned the influence of Firesign Theatre's experimental approach on her own work.

- **Japanese radio comedy:** Firesign Theatre's innovative style has been cited as an influence on Japanese radio comedy, with many Japanese comedians and writers drawing inspiration from their work.

Firesign Theatre's unique blend of surrealism, satire, and absurdity resonated with Japanese audiences and artists, who appreciated their innovative approach to comedy and storytelling."

(It's This Little Chromium Switch here")

"It's much easier to make people cry than to make them laugh." ~ Vivien Leigh

PLANETCLICK
ALL FAIL

ROY
SACCIO
SPAIN 1
SPAIN 2
SPAIN 3

All Hail

Kent McCamon, Tom Gedwillo, Cat Ishikawa, my houseguest **Dan Crist**, **Hank Rosenfeld**, *The Week* for all the quotes as usual, and to my

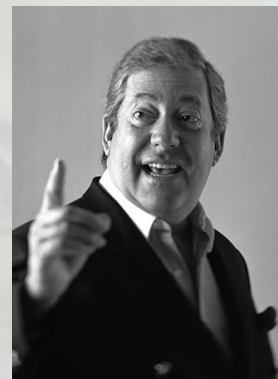


new, loving and generous friend, **Adele Abrams**. Who is taking me away this month to the Telluride Blues and Beer Festival. I'm sure I'll have some tales to tell in the next orbit!

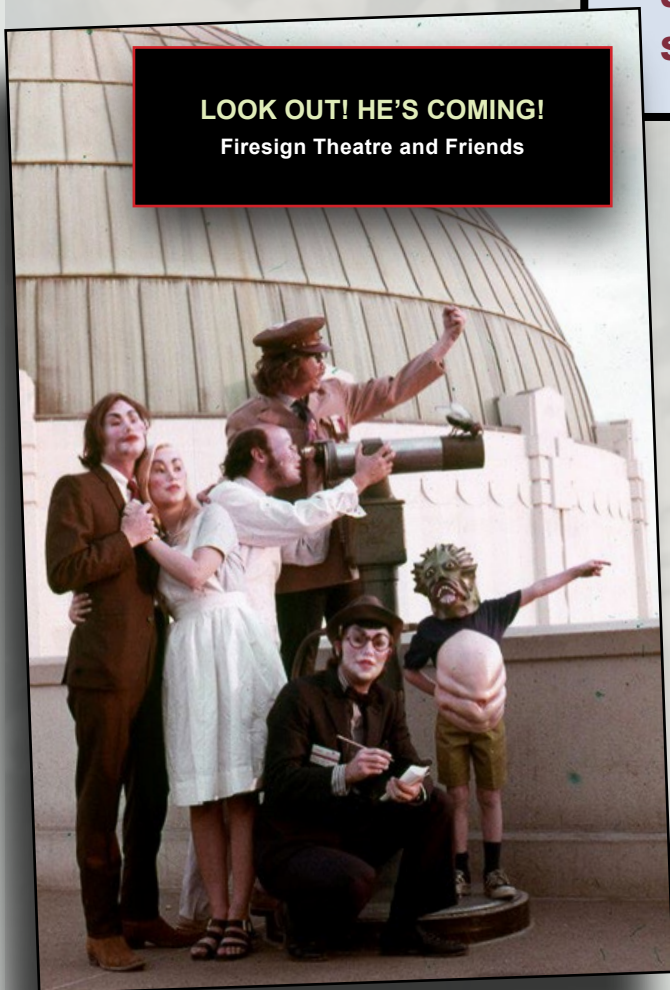
And a sad farewell to several schoolmates with whom I've lived and laughed over the years: From

Riverdale Country School, **Ken Burrows**, **Anthony Dias Blue** (*above right*) and from the Yale Drama, **Peter Saccio** (*left*). Fond, fun memories forever more.

"To leave the world better than you found it, you have to pick up other people's trash." ~ Bill Nye



LOOK OUT! HE'S COMING!
Firesign Theatre and Friends



"I'm not crazy about reality, but it's still the only place to get a decent meal." ~ Groucho Marx

Visit the new **FIRESITE** and the old **BOOMERS**

HOME • FORTUNE COOKIE • RIGHT WING UNCLE • MERCH

To join the Planet Proctor mailing list **CLICK HERE**.

PLANET PROCTOR © Phil Proctor 2024 • layout and production Cristofer Gross / **Theatertimes.org**